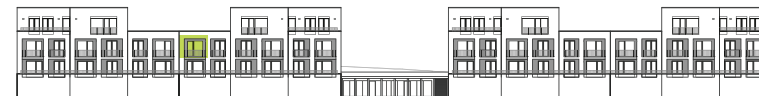
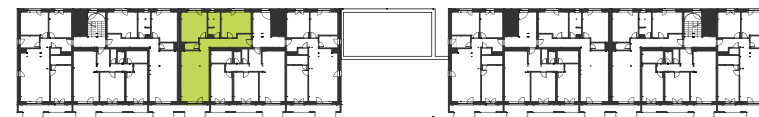
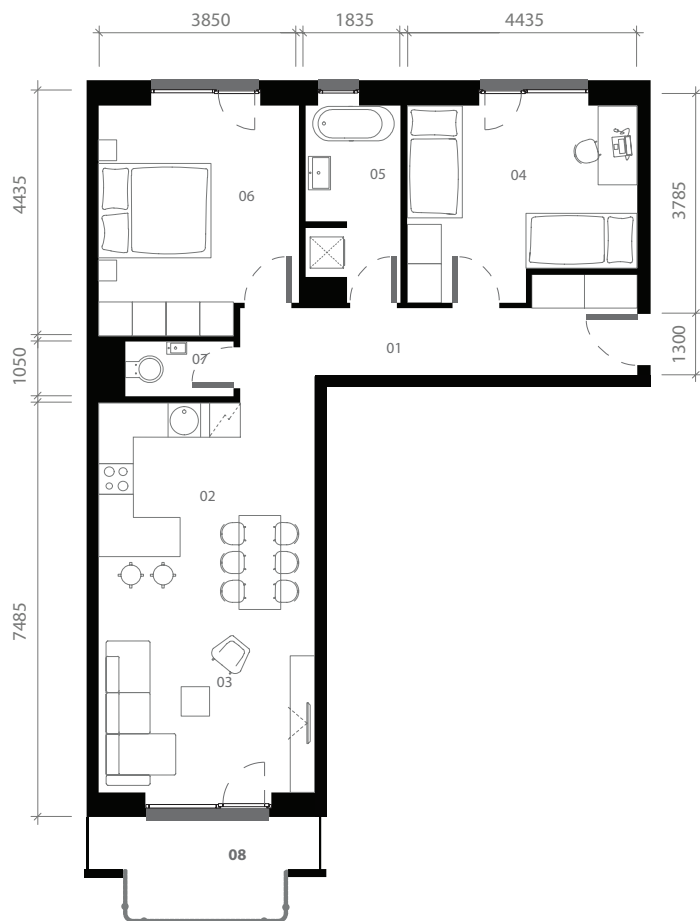


# PÔDORYS BYTU 2.A2.23

## 3 izbový byt



- |                  |                      |
|------------------|----------------------|
| 1. chodba        | 11,86 m <sup>2</sup> |
| 2. kuchyňa       | 12,24 m <sup>2</sup> |
| 3. obývacia izba | 18,82m <sup>2</sup>  |
| 4. izba          | 15,54 m <sup>2</sup> |
| 5. kúpeľňa       | 6,47 m <sup>2</sup>  |
| 6. spálňa        | 16,25 m <sup>2</sup> |
| 7. WC            | 2,17 m <sup>2</sup>  |
| 8. terasa        | 7,43 m <sup>2</sup>  |

BYT	83,35 m <sup>2</sup>
TERASA	7,43 m <sup>2</sup>
<b>PLOCHA SPOLU</b>	<b>90,78 m<sup>2</sup></b>

Výmery su orientačné a môžu sa mierne meniť po vypracovaní RPD.

**Graniar.**

